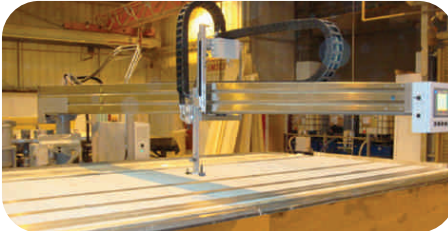


Manufacture



Thanks to its on-going programme of steady investment in facilities and plant, Montracon maintains its technological edge and ranks with the best of any European manufacturer for production efficiency and flexibility.



Part of Montracon's on going investment programme, this computer controlled machine dispenses and spreads just the right amount of adhesive to secure the outer and inner facings to the insulated panels.



Styrofoam insulation panels – resistant to water absorption and easily repaired – are used for the top and side panels.

www.montracon.com



To maintain quality and performance of the structure overall, Montracon insists on manufacturing its panels in house.



The floor includes HD300 insulation plus a steel/plywood laminate. It can handle point loadings of up to 5.5tonnes and is topped by either an aluminium overlay or a grit finish applied above a sacrificial plywood layer, the latter easing repair.



Loadlok cargo bars can be either flush or surface mounted on side panels.

Rigid Truck

In addition to its extensive range of refrigerated trailers, Montracon produces a range of rigid bodies tailored for two and three axle vehicles from 7.5tonnes gross weight.



Column mounted or retractable tail lifts – options at the rear.



The inherent strength of Montracon's build opens the way to a wide range of options, included side doors/access demanded by customers to facilitate kerbside loading/unloading.



Bodies designed for rigid applications at up to 26tonnesgross weight.

Cold Stores & Blast Freezers

Alongside refrigerated trailers and rigid bodies, Montracon also makes a range of transportable cold stores and blast freezers. They are aimed at those wanting a more flexible and quicker alternative to 'bricks and mortar' to increase their 'cold' capacity on either a temporary or more permanent basis.

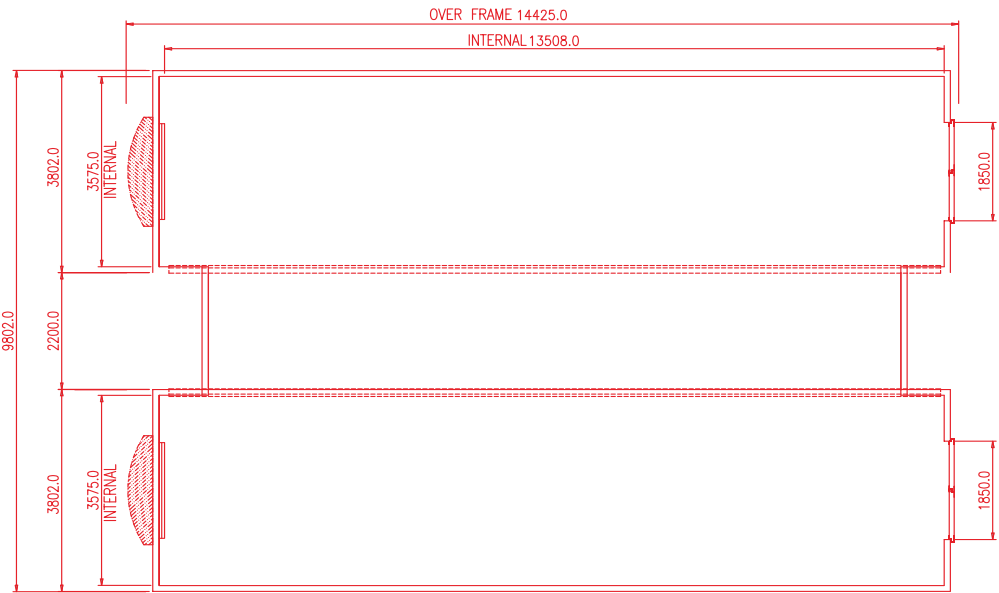
Eight cold store models are available capable of handling from 10 to 37 pallets. The highest capacity 37 pallet units can be linked together, boosting capacity by 57 pallets per link. In addition, the 37 pallet unit can be linked to suitable existing facilities.



Eight transportable cold store models handling from 10 to 37 pallets.



Top of the range 37 pallet units can be linked to each other to boost capacity by a minimum 57 pallets per link.



PLAN VIEW

Cold Storage Range

Pallet (capability)	10	14	16	22	22	31	26	37
Dimensions								
Ext (m)	6.096 x 2.896	6.096 x 3.804	9.250 x 2.896	9.250 x 3.804	12.192 x 2.896	12.192 x 3.804	14.425 x 2.896	14.425 x 3.804
Int (m)	5.18 x 2.672	5.18 x 3.580	8.334 x 2.672	8.334 x 3.580	11.276 x 2.672	11.276 x 3.580	13.509 x 2.672	13.509 x 3.580

*All models are 2.7m high (ext), 2.26m high (int)

Whatever your trailer requirement may be and wherever in Britain and Ireland you are, you will be close to one of Montracon's regional sales executives who will be happy to visit and to discuss how Montracon can best meet your needs.

Montracon reserve the right to change specification and the status of standard optional features at any time.

Carr Hill, Doncaster, South Yorkshire DN4 8DE
t: +44 (0)1302 732500 | f: +44 (0)1302 732503
e: sales@montracon.com
www.montracon.com

Montracon
the trailer for road transport

Montracon
the trailer for road transport

Fridges



Fridges

Montracon is the recognised leader in the development of the broadest range of high quality refrigerated and insulated trailers – from the standard single to the multi compartment/temperature – to handle all from farm collection of fresh produce to multi drop high street distribution.

For added fuel savings of up to 10% and more, Montracon offers the full FST (fuel saving trailer) package for new trailers. Alternatively, there is the option of fitting selected features drawn from the package either to new or existing trailers of any make.

With an enviable reputation for performance, longevity and low whole life maintenance and operating cost, the range encompasses straight and step frame models plus single and double deck, the latter up to 4.9m overall, for operation at up to 44tonnes gtw.

Popularly required 'standard' trailers are available, ex stock; a range of factory fitted options are available for fast factory fit and quick delivery; bespoke trailers are built to order.

All trailers have a five year chassis/body warranty.



Developed for moving fresh produce at low 'ambient' temperatures, the Insuliner has insulated curtains, roof and rear doors plus a choice of ThermoKing or Carrier fridge units.



Used in conjunction with easily removed docking bars that can be set at equal or differing heights, the Jumbo trailer's capacity can be fully utilised – even with pallets of varying heights.



High roof versions offered with either fixed or powered deck, or with easily removed/stowed docking bars.



High roof versions feature a one piece side panel and have a cant roof as standard, the latter to reap fuel saving benefits reported by operators of 10% and more.

✓ Features



Rounded corner caps: At the front, either small or large rounded corner caps and pillars to suit customer preference present a smoother profile to reduce air turbulence.



Body mounting: Bodies are bolted to the full length trailer chassis.



Rear compression member: The rear compression member minimises the risk of damage when reversing onto loading docks.



Conduit: Side marker wiring runs in conduit to protect from the elements.

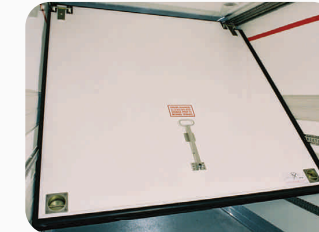


MAVIS: The Montracon Articulated Vehicle Interconnecting System (MAVIS) facilitates coupling/uncoupling at either side from ground level.



Optional full width rubbing plate: aids manoeuvrability within RDCs.

✂ Body Options



Body options: Providing added flexibility for dual temperature operations, the single piece and split moving bulkheads pivot at, slide easily along and can be secured anywhere along the roof rail. Air transfer is offered via an optional bulkhead fan or by optional remote evaporators.



Longitudinal partitions: Longitudinal partitions are offered as alternatives to fixed/moving bulkheads, with additional, remote evaporators available to suit temperature/operating conditions.



Tail lifts: Column mounted and retractable tail lifts are options.



Floor: The floor can be topped with an aluminium overlay or a grit finish.



Docking bars: Removable docking bars/racks can be set at differing heights to utilise full capacity and to handle double stacking of pallets of varying heights.



Fridge units: Carrier and ThermoKing fridge units offered as standard, other units on request.

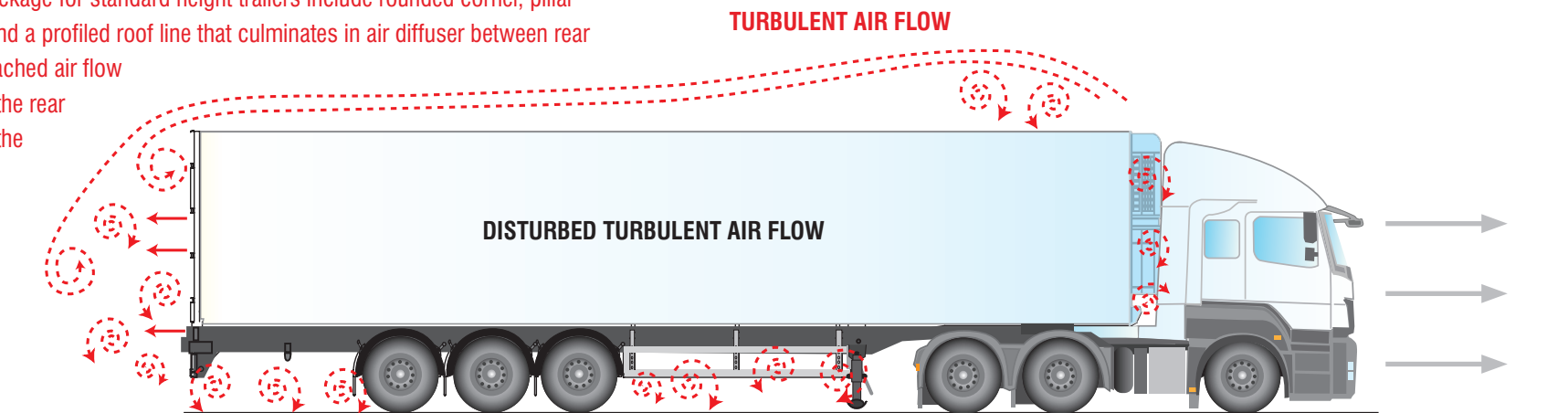


Doors: Barn or roller shutter doors can be fitted at the rear. A hinged side door is an option.

🛢 Tailored to save fuel

Depending on type of operation, height of trailer and the degree of aerodynamics it features, Montracon operators have reported fuel savings of up to 10% or more when compared to an otherwise equivalent but standard 'box' trailer.

Features included in the FST package for standard height trailers include rounded corner, pillar and roof cappings, sideskirts and a profiled roof line that culminates in air diffuser between rear posts. All combine to direct attached air flow into the base drag area behind the rear doors. A canted front replaces the profiled roof line on max height trailers.



TURBULENT AIR FLOW

DISTURBED TURBULENT AIR FLOW



Vortex generators along the top rear edge of the roof offered as an option to air diffuser for retrofit to existing trailers.

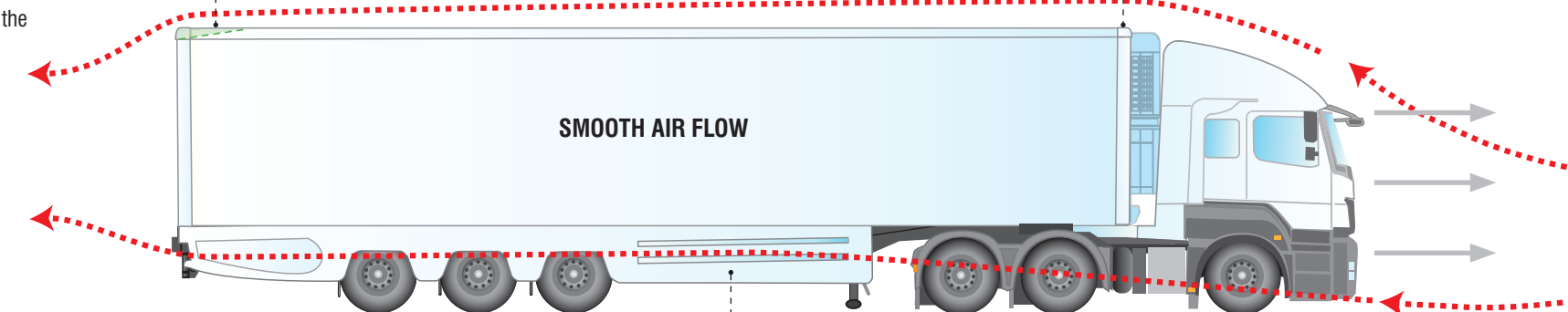


Flat roof leads to air diffuser between the rear corner posts.

AIR PASSING THROUGH VORTEX



Rounded corner, pillar and roof cappings present a smoother profile to reduce air turbulence.



SMOOTH AIR FLOW



Side skirts help to maintain attached air flow down the trailer sides.

Pricing fuel at £1.13/litre, assuming an average mileage of 80,000 and a maximum fuel consumption improvement of 10%, savings at the pump could add up to an average £6500/annum over 10 years.*



*Assumes vehicle achieves 9mpg and fuel cost increase of 5% per annum.