



BPW Limited

BPW House Centurion Way • Meridian Business Park • Leicester LE19 1WH
Phone: 0116 281 6100 • Fax: 0116 281 6140 • Email: info@bpw.co.uk • www.bpw.co.uk

IMPORTANT - Service measure on trailer disc brakes of the BPW ECO Disc TS2 series 2

BPW Bergische Achsen Kommanditgesellschaft (hereinafter referred to as "BPW") stands for safe products and sustainable solutions. As part of our product and continuous field monitoring, we have determined that leaks can occur around the adjuster and/or the bellows on our trailer disc brakes of the type **BPW ECO Disc TS2** from the production period **12.03.2019 to 23.06.2022**.

The leaks can lead to corrosion inside the brake caliper, resulting in failure of the automatic adjuster function. In extreme cases, the affected caliper will lose its braking capability. This concerns axle production in **2019, 2020 and 2021**. Vehicles with brakes from the first half of 2022 will be subject to a separate service measure. Information on this will be provided at a later stage.

We have identified the cause of the leakage and as such the problem has been rectified on the calipers delivered from July 2022 onwards.

To avoid functional impairments and possible consequential damage, it is necessary to subject the vehicles with axles from **production years 2019, 2020 and 2021** to a continuous control measure as described at the beginning in the attached "Total process" schedule. This involves a thorough visual and temperature check by the driver to identify suspicious brakes.

As can be seen from the flow chart, all vehicles must undergo a functional test by a workshop at the end (see flow chart "Functional check by workshops"). Since the risk appears to be higher for the older vehicles, vehicles with axles from the **production years 2019 and 2020** must urgently and at short notice be subjected to a brake roller test, irrespective of the control measures implemented by the vehicle owner or user. Proof of this test must be documented and submitted to BPW upon request.

Vehicles with axles from **production year 2021** are to be subjected promptly to the measures described in the "Functional check by workshops" process plan, irrespective of the control measures implemented by the driver (without additional brake roller test).

Detailed technical service instructions for workshops are required to carry out the steps in accordance with the "Functional test" process. We recommend having the function test performed by a BPW Service Provider. A list can be provided by contacting campaigns@bpw.co.uk

Depending on the findings and parts availability, it may be necessary for individual vehicles to undergo further measures later.

To determine the vehicle identification numbers (VIN) of vehicles and vehicle owner addresses, we enclose the list of the axles concerned as an excel file. We would be grateful if you would return the list to us containing the names and addresses and contact details for those customers affected. The excel file is available electronically upon request. The implementation of this measure with our customers can be handled completely by BPW Limited following receipt of the details requested.

The organisational execution of this measure will be handled by BPW Bergische Achsen Kommanditgesellschaft as well as the corresponding BPW subsidiary and country representative (see below). For clarification of further technical questions please contact BPW Limited.

BPW Limited
Centurion Way
Meridian Business Park
Leicester
LE19 1WH
Email: services@bpw.co.uk
Tel: 0116 2816100

We will inform you in due course about further measures required in this matter.

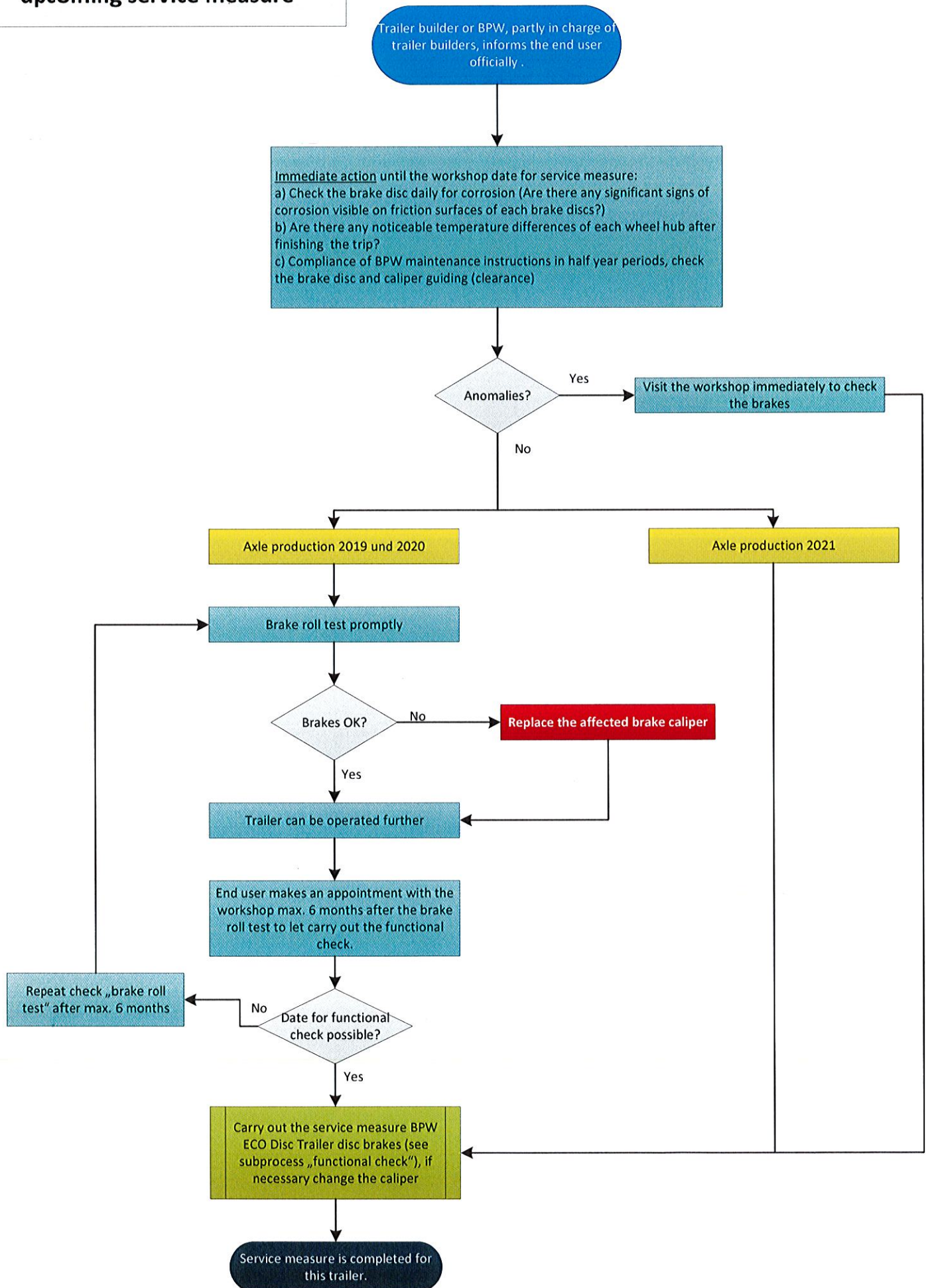
BPW Limited is also in the process of contacting the DVSA regarding this service measure.

We very much regret that these necessary measures will result in increased work for your company and will try to keep the inconvenience for you as low as possible. To maintain the functional safety of the vehicles, we ask for your active support and would also like to thank you in advance for your assistance in this matter.

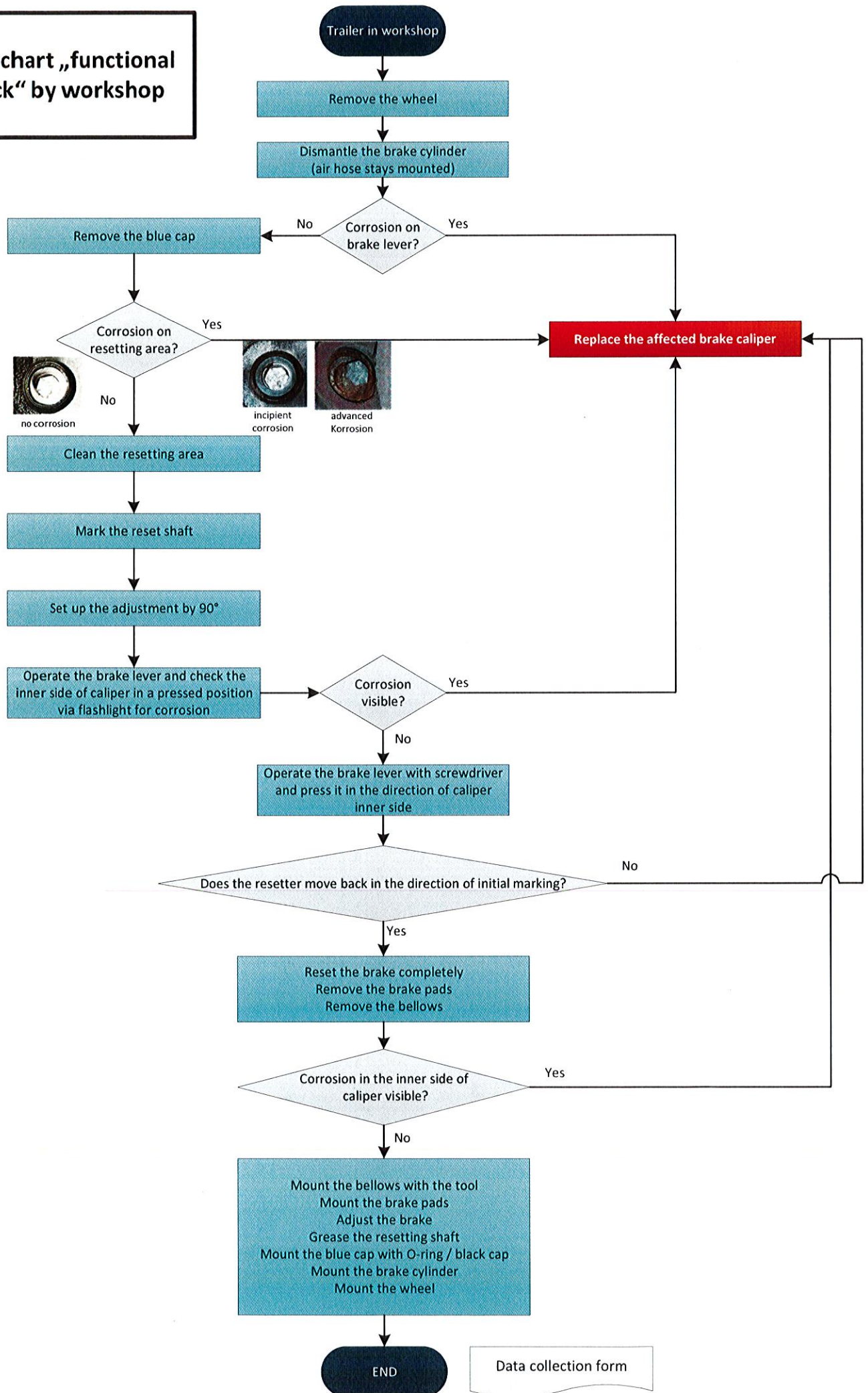
Attachments:

Flow chart "Overall process" of the upcoming service measure
Flow chart "Functional check" by the workshops
Excel File

Flow chart „total process“ of upcoming service measure



Flow chart „functional check“ by workshop



Data collection form